

Allegretto

div.

*f* *ff*

Cadenza

Polka

*f* *p*

*mf* *mf*

*f* *mf*

4 Poco animato

*f* *mf*

*f*

6 Tempo I.

*p* *f*

*mf* *f* *f*



Flicorno Tenore /2  
1. Tenorhorn in B /2

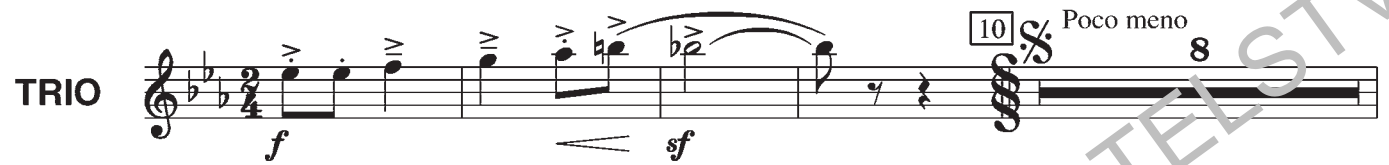
8 Poco animato



Soli 9 Tempo I.



TRIO



11



12 Animato



TRIO D.S. al Fine, attacca  
Polka D.C. al CODA

